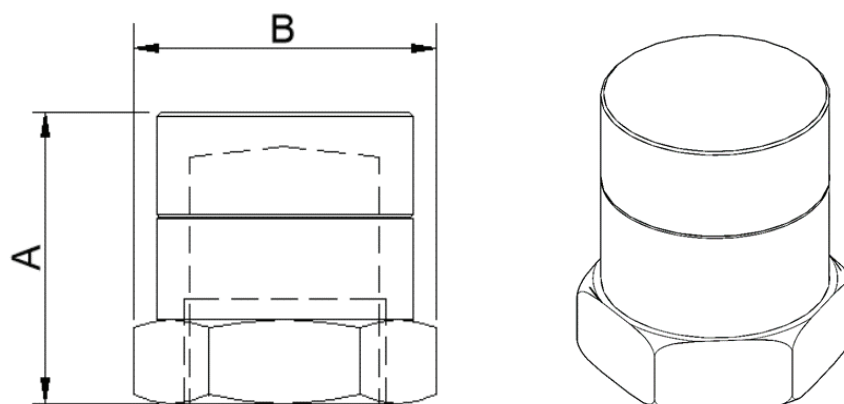


Discharge Nozzle

SG-227EA Fire Extinguishing System



Specification

General Description	For 360° release of agent (8 holes)
Certification No.	EX28621
Material	Brass

Part No.	Material	Sizes (inches)	A (mm)	B (mm)	Allowable Orifice Size (mm)
SG075-BR-015-UL	Brass	1/2"	45	31.75	2.2 – 4.9
SG075-BR-020-UL		3/4"	45	38.10	3.4 – 6.6
SG075-BR-025-UL		1"	56	44.45	4.3 – 8.4
SG075-BR-032-UL		1-1/4"	65	50.80	5.6 – 11.0
SG075-BR-040-UL		1-1/2"	70	63.50	6.5 – 12.9
SG075-BR-050-UL		2"	88	76.20	8.4 – 16.6

HOCHIKI ASIA PACIFIC PTE. LTD.

82 UBI Ave 4 #06-02

Edward Boustead Centre, Singapore 408832 TEL: 65-6841-9728 |

FAX: 65-6841-9781 URL : www.hochikiasiapacific.com

10/2021



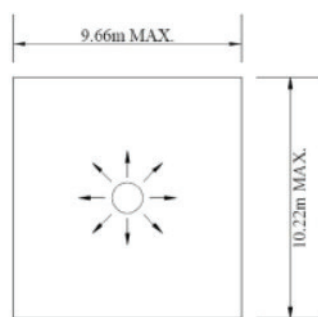
Specifications subject to change without notice.

Continued on back.

Discharge Nozzle

SG-227EA Fire Extinguishing System

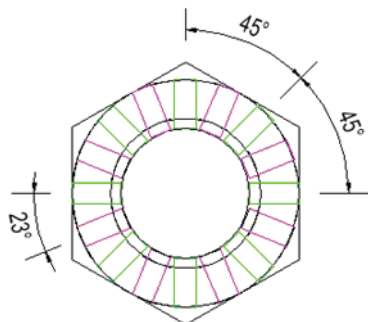
Technical Details



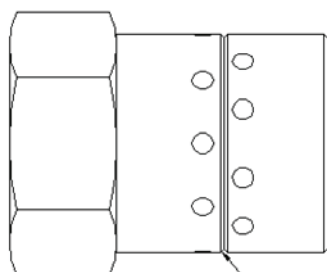
360° Discharge Pattern
Nozzle Area Coverage

- Maximum area coverage is 98.7m²
- Maximum nozzle height coverage is 4.87m
- Maximum distance between nozzles should not exceed 10.22m
- 300mm minimum void height

Drilling Details

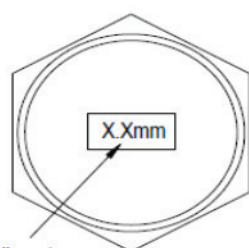


360° Discharge pattern.
Drill 8 holes at 45° angle on each groove with the bottom holes angled at 23° off the top set.
Total orifice holes is 16, size to be determined by computer calculations.



0.5 MM GROOVE LINE MARKING AS
CENTER POINT REFERENCE TO
DRILL ORIFICE HOLE

Marking Details



Orifice diameter
engraved at the base
of the nozzle